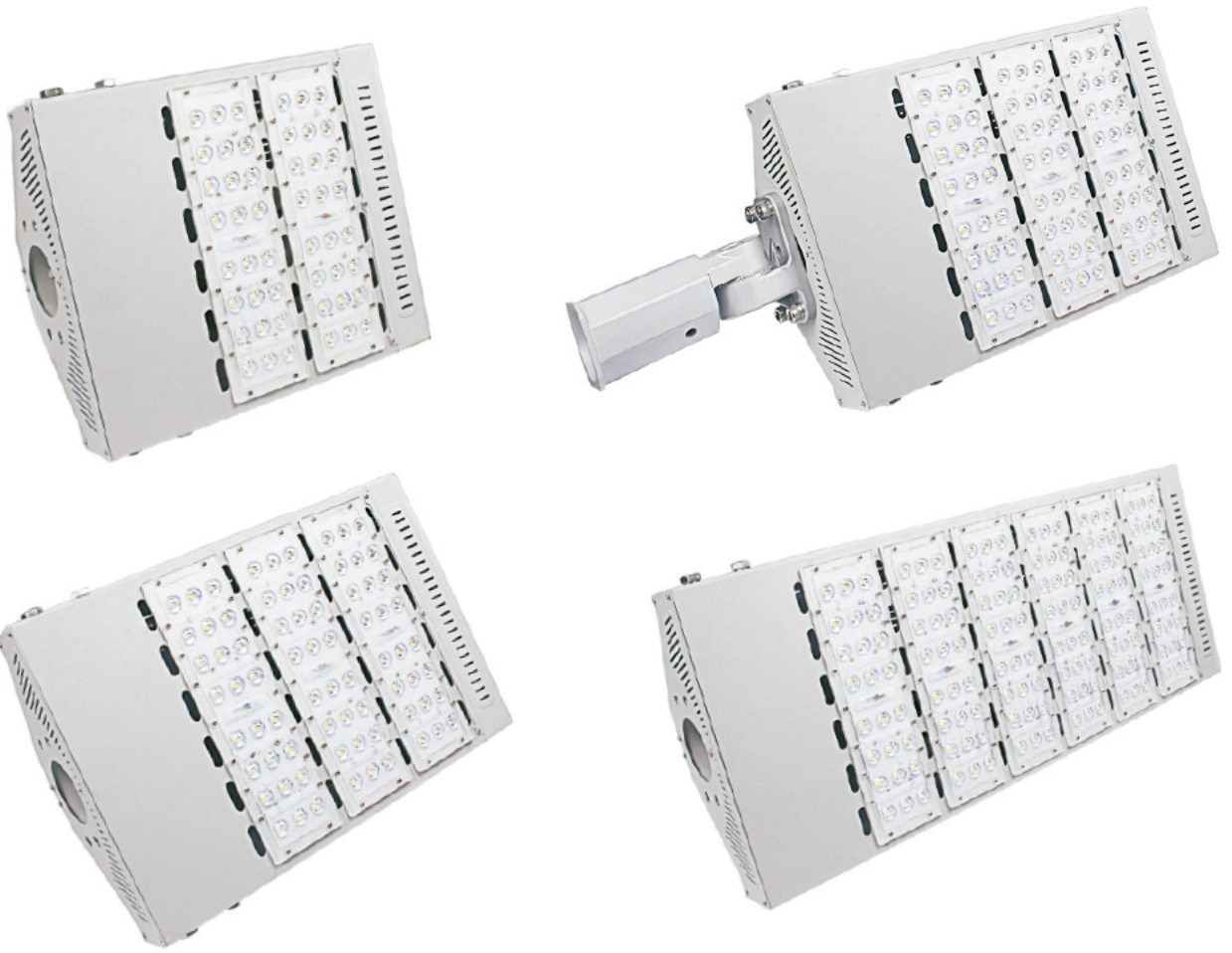


# LED STREET LIGHT (E SERIES 120 LM/W)



## FEATURES

- Outstanding 120lm/w, max 150lm/w
- High performance Philips 3030SMD
- Meanwell power driver
- Stylish design with effective heat sink
- Robust IP65 & IK08 rated for industrial use
- 180°rotatable arm pole adaptor optional



Photocell

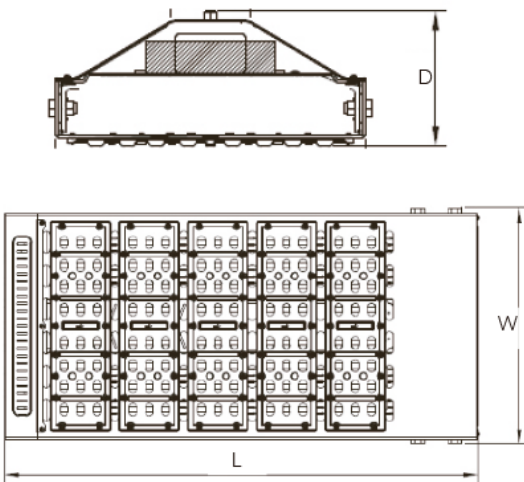


Rotatable Pole Adaptor

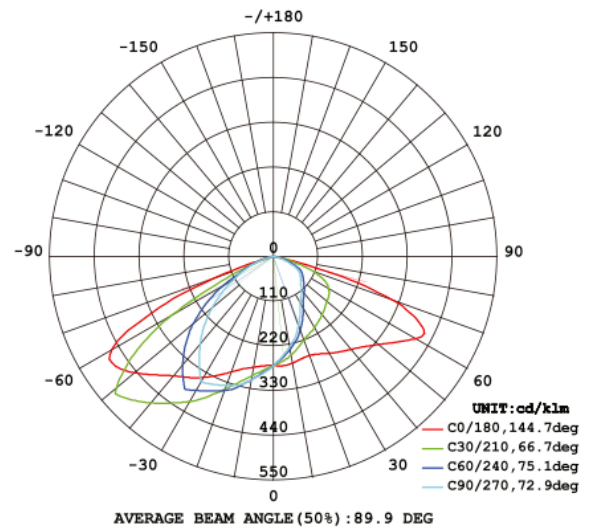
## APPLICATIONS

- Roadway, High way, pedestrian road, parking lot, etc.

## SIZE in mm



## LIGHT DISTRIBUTION CURVE



Item No.	Power	Input Voltage	Lumen Flux	LED Qty	Product weight	Product size	Packing CTN size
DL-SLE-060W	60W	AC100-277V	7,200lm±5%	48pcs	2.5kg	L268xW317xD133mm	L330xW395xH180mm (3kg)
DL-SLE-080W	80W	AC100-277V	9,600lm±5%	72pcs	3.5kg	L360xW317xD133mm	L425xW395xH180mm (4kg)
DL-SLE-120W	120W	AC100-277V	14,400lm±5%	96pcs	4kg	L452xW317xD133mm	L515xW395xH180mm (4.6kg)
DL-SLE-160W	160W	AC100-277V	19,200lm±5%	96pcs	4.5kg	L544xW317xD133mm	L610xW395xH180mm (5kg)
DL-SLE-200W	200W	AC100-277V	24,000lm±5%	120pcs	5.5kg	L636xW317xD133mm	L700xW395xH180mm (6kg)
DL-SLE-240W	240W	AC100-277V	28,800lm±5%	96pcs	7kg	L728xW317xD133mm	L795xW395xH180mm (7.9kg)
DL-SLE-280W	280W	AC100-277V	33,600lm±5%	120pcs	8.5kg	L820xW317xD133mm	L885xW395xH180mm (9.5kg)

CCT: 3000K/4000K/6500K