

# LINEAR LED PENDANT LIGHT 10065 SERIES



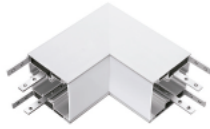
color options



DL-90L1-10065



DL-90L3-10065



DL-90L2-10065



DL-90T-10065



DL-90X-10065



## FEATURES

- Decent seamlessly linkable design into different pattern with smart connectors
- Quick connectable with smart accessory
- High efficacy over 100lm/w, 80Ra
- High performance Epistar chip 2835SMD
- High reliable UL approved flicker free power driver
- Silver, white and black finishing optional
- 5 smart connectors optional including L shape, X, T shape available
- Suspension and surface mount installation optional
- Dimming option: 0-10V
- 3 year warranty



0-10V dimmer

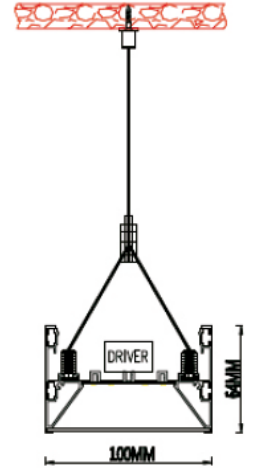


smart quick L jointing

## APPLICATIONS

- Office, meeting room, supermarket, retail store, hotel, school, etc.

## SIZE in mm



Item No.	Power	Input Voltage	Lumen Flux	LEDsP	Product weight	Product size	Packing CTN size
DL-LP10065-20W	20W	AC100-277V	2,000LM±5%	0.2W 2835SMD	1.4kg	600x100x64mm	65x32x21cm (9pcs/CTN)
DL-LP10065-40W	40W	AC100-277V	4,000LM±5%	0.2W 2835SMD	2.6kg	1200x100x64mm	125x32x21cm (9pcs/CTN)
DL-LP10065-60W	60W	AC100-277V	6,000LM±5%	0.2W 2835SMD	3.9kg	1800x100x64mm	185x32x21cm (6pcs/CTN)
DL-LP10065-80W	80W	AC100-277V	8,000LM±5%	0.2W 2835SMD	5.1kg	2400x100x64mm	245x32x21cm (6pcs/CTN)

CCT: 3000K/4000K/6000K