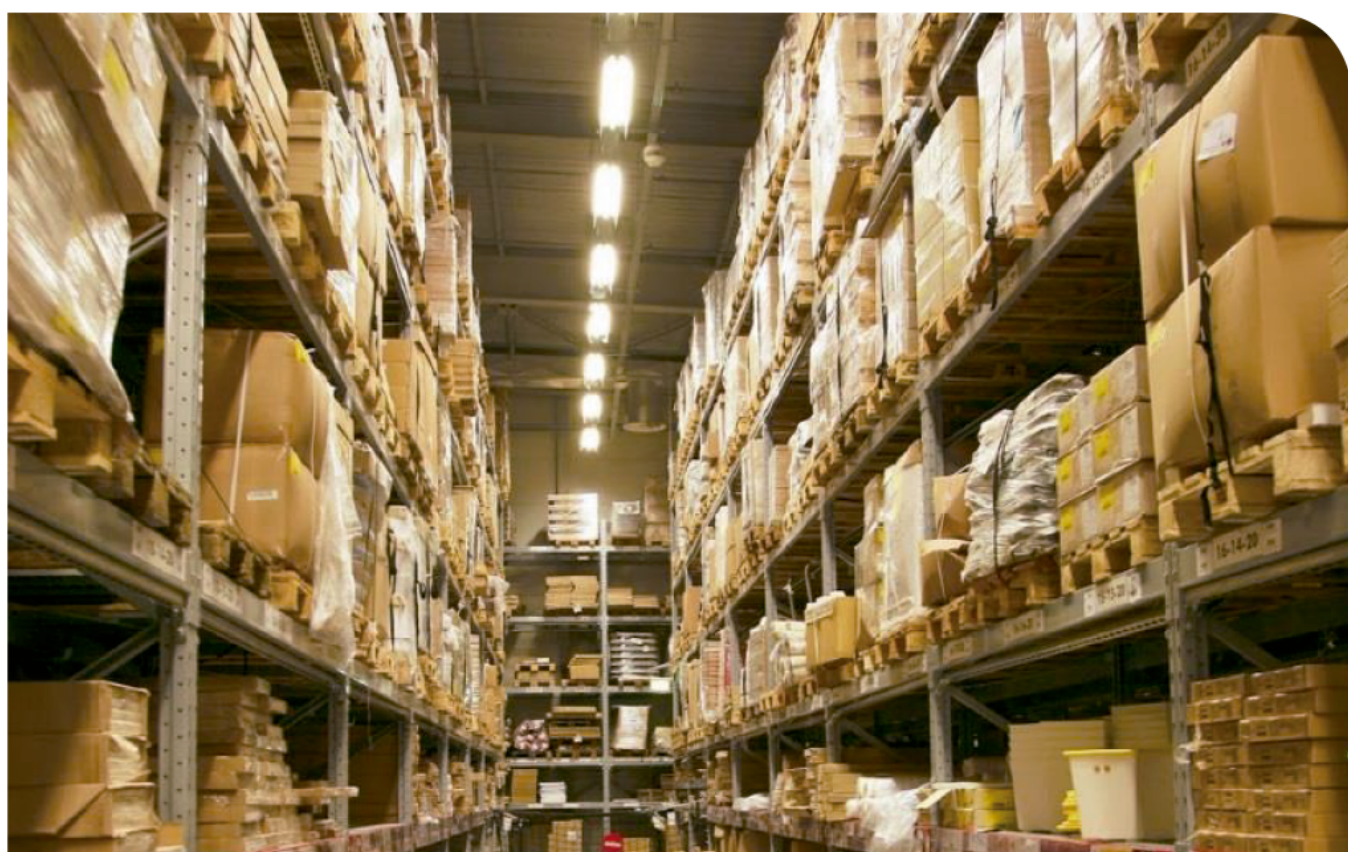


LINEAR LED HIGH BAY LIGHT (130LM/W)



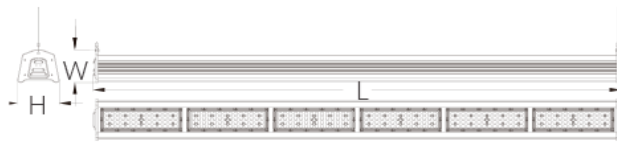
FEATURES

- Outstanding 130lm/w with Philips 3030SMD
- High performance Meanwell HLG series power driver
- Individual modulized design with perfect thermal dissipation and easy maintenance
- Connectable linear design offering more versatile lighting solution
- Robust IP65 for industrial use
- 5 types of beam angle solution for varying industrial applications
- 2 ways of installation(surface mount, suspension) for varying project application

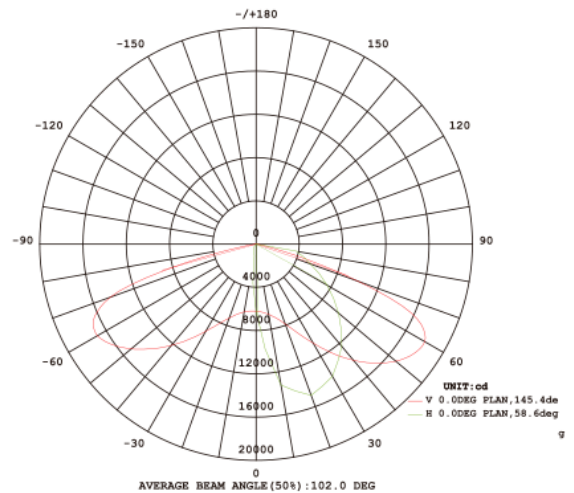
APPLICATIONS

- Warehouse, workshop, sport venue, supermarket, high ceiling corridor, etc.

SIZE in mm



LIGHT DISTRIBUTION CURVE



Item No.	Power	Input Voltage	Lumen Flux	Housing Color	Product weight	Product size (L*W*H)	Packing CTN size (1pc/CTN)
DL-HBL-50W	50W	AC100-277V	6,500lm±5%	Silver Grey (RAL 7001)	2kg	350*115*144mm	385*165*195mm (2.5kg)
DL-HBL-100W	100W	AC100-277V	13,000lm±5%	Silver Grey (RAL 7001)	3kg	620*115*144mm	655*165*195mm (3.8kg)
DL-HBL-150W	150W	AC100-277V	19,500lm±5%	Silver Grey (RAL 7001)	4.2kg	887*115*144mm	920*165*195mm (5kg)
DL-HBL-200W	200W	AC100-277V	26,000lm±5%	Silver Grey (RAL 7001)	5.5kg	1154*115*144mm	1185*165*195mm (6.5kg)
DL-HBL-250W	250W	AC100-277V	32,500lm±5%	Silver Grey (RAL 7001)	6.5kg	1421*115*144mm	1450*165*195mm (7.5kg)
DL-HBL-300W	300W	AC100-277V	39,000lm±5%	Silver Grey (RAL 7001)	8.5kg	947*230*173mm	920*280*220mm (10kg)
DL-HBL-400W	400W	AC100-277V	52,000lm±5%	Silver Grey (RAL 7001)	11kg	1214*230*173mm	1185*280*220mm (12.5kg)
DL-HBL-500W	500W	AC100-277V	65,000lm±5%	Silver Grey (RAL 7001)	13kg	1481*230*173mm	1450*280*220mm (14.5kg)